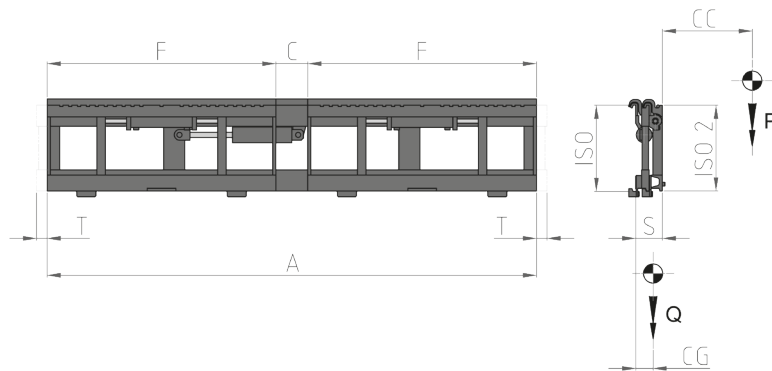


107.3 Triple Sideshift



Hydraulic functions: 2 | Max working pressure: 200 Bar

Features:

- Handling of multiple pallets side by side.
- Handling of 2/4 pallets simultaneously, depending on the type of forks installed.
- Rear shifting structure with two connected shifting carriages.
- Easier and safer manoeuvres, even in narrow spaces.

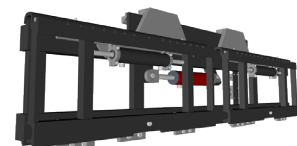
Special Equipment:

- Special widths and/or strokes.
- Custom made Forks.
- Custom made Load Backrest.
- Load Stabiliser with custom made dimensions/openings.

Article	Attachment Capacity	Load Centre of Gravity	ISO	Carriage Width		Distance		Stroke	Thickness	Centre of Gravity	Weight
N°	P (kg)	CC (mm)	2328	A (mm)	F (mm)	C Min (mm)	C Max (mm)	T (mm)	S (mm)	CG (mm)	Q (kg)
15AFA2C0001	2500	500	2	1610	800	10	310	± 100	125	68	239
15AFA2C0002	2500	500	2	2100	980	20	420	± 100	125	68	286
15AHY7C0001	3500	500	3	2100	980	20	420	± 100	144	78	400
15AHY7C0002	3500	500	3	2180	980	100	500	± 100	144	80	408

Oil flow rate	
ISO	(L/min)
2	15
3	15

↔ Shifting



Please refer to our catalogue for further Special Equipment