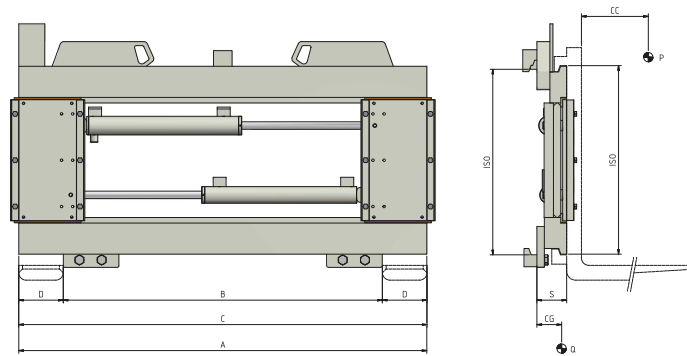


## 675 Fork Positioner



HYDRAULIC FUNCTIONS: 1 | MAX WORKING PRESSURE: 80 Bar

### Features :

- Differentiated Cylinders for constant and synchronised fork movement.
- Fast and accurate lifting and positioning of loads.
- Pressure Relief Valve.
- Recommended use of forks with max length 1500 mm.
- Adjustable plates for use of forks with different sections.
- Reduced damage to pallets and goods.
- Easier maneuvers even in narrow spaces.

### Special Equipment:

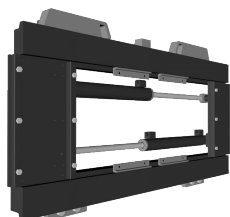
- Special widths and/or openings.
- Standard Forks.
- Load Backrest.

ART. N°	P (Kg)	CC (mm)	ISO 2328	A (mm)	B (mm)	C		D (mm)	S (mm)	CG (mm)	Q (Kg)
						Min (mm)	Max (mm)				
17SLL3C0004	5000	500	III	1500	880	430	1500	150	80	46	171
17SLL3C0005	5000	500	III	1560	950	430	1560	150	80	46	174
17SLL3C0006	5000	500	III	1660	1050	430	1660	150	80	46	180
17SR04C0001	8000	600	IV	1420	1200	560	1420	200	94	49	280
17SR04C0005	8000	600	IV	1600	1440	560	1600	200	94	50	339
17SR04C0003	8000	600	IV	1800	1500	560	1800	200	94	50	350
17SR04C0004	8000	600	IV	2000	1500	560	2000	200	94	50	375

### OIL FLOW RATE

ISO	(L/min)
	↕
III	20
IV	45

↕ Opening  
↔ Closing



P ATTACHMENT CAPACITY  
CC LOAD CENTER OF GRAVITY  
A CARRIAGE WIDTH  
B MINIMUM FORK CARRIAGE  
C OPENING RANGE  
D FORK WIDTH  
S THICKNESS  
CG CENTER OF GRAVITY  
Q WEIGHT

Please refer to our catalogue for further Special Equipment