

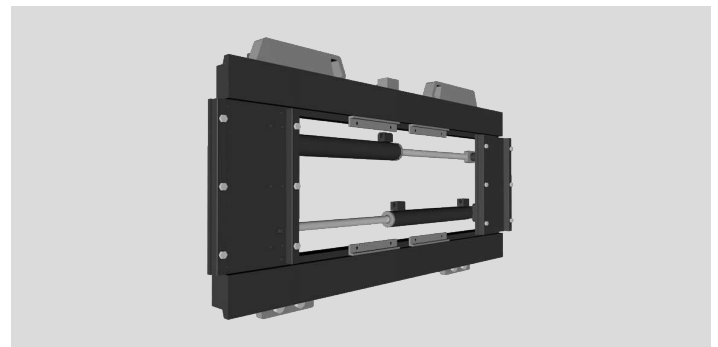
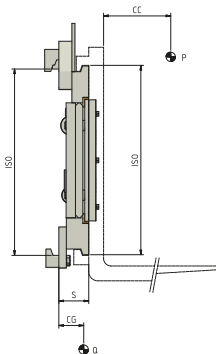
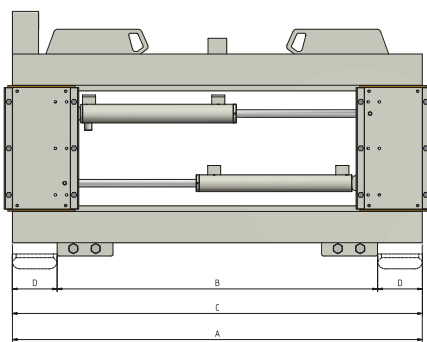
# Fork Positioners

Fork Positioner that guarantees a constant and synchronized movement of the forks thanks to differentiated cylinders . We suggest not to mount forks over 1500 mm long. Adjustable plates allow to use forks with different sections size. A pressure relief valve is supplied as standard on each model.

## 675 FORK POSITIONER

REFERENCE	CAPACITY (P) Kg	LOAD CENTRE (CC) mm	ISO 2328 - FEM	CARRIAGE WIDTH (A) mm	MIN FORK CARRIAGE (B) mm	OPENING RANGE (C MIN) mm (C MAX) mm		FORK WIDTH (D) mm	THICKNESS (S) mm	CENTER OF GRAVITY (CG) mm	WEIGHT (Q) Kg
17SLL3C0004	5000	500	III	1500	880	430	1500	150	80	46	171
17SLL3C0005	5000	500	III	1560	950	430	1560	150	80	46	174
17SLL3C0006	5000	500	III	1660	1050	430	1660	150	80	46	180
17SR04C0001	8000	600	IV	1420	1200	560	1420	200	94	49	280
17SR04C0005	8000	600	IV	1600	1440	560	1600	200	94	50	339
17SR04C0003	8000	600	IV	1800	1500	560	1800	200	94	50	350
17SR04C0004	8000	600	IV	2000	1500	560	2000	200	94	50	375

Hydraulic functions required: 1 | Maximum working pressure: 80 bar



### OPTIONS

- Pipes and Fitting Kit.
- Quick Release Hoses couplings Kit.
- Pressure Gauge.
- Bronze Wear Pads.
- Quick Release Hooks.
- Drilling for Load Backrest.
- Solenoid Valve two Functions with Electric Kit (specify voltage).
- Pressure Relief Valve supplied as standard.
- Check Valve for Barrel Grabbing.
- Automatic Greasing System for Semi-Integral Sideshift.

### ADDITIONAL EQUIPMENT ON REQUEST

- Forks Positioners with special width and/or stroke.
- Forks with any section and lenght.
- Load Backrest of various widths and heights.

### OIL FLOW RATE

TYPE	ISO 2328 - FEM	MIN CAPACITY (L/min)	MAX CAPACITY (L/min)	RECOMMENDED CAPACITY (L/min)
675	ISO 3	15	25	20
675	ISO 4	35	60	45

- A - Pin-Type Forks
- B - Bolted Forks
- C - Welded Forks
- D - Telescopic Forks

