

Fork Positioners

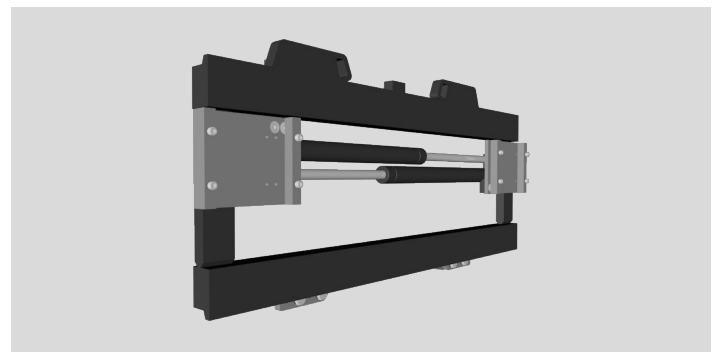
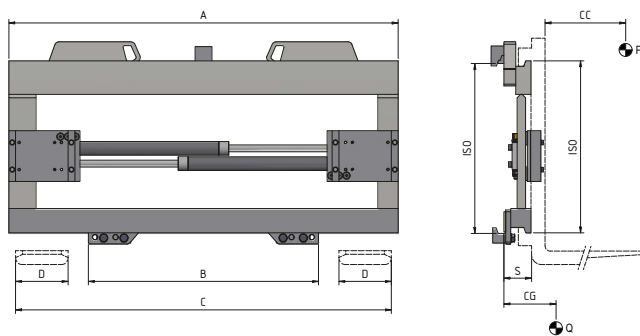
Fork Positioner realized with the exclusive “Moving Housing System” (A.T.I.B. Patented) that guarantees a constant and synchronized forks movement. We suggest not to mount forks over 1500 mm long. Adjustable plates allow to use forks with different sections size. A pressure relief valve is supplied as standard on each model.

575 FORK POSITIONER

PATENTED

REFERENCE	CAPACITY (P) Kg	LOAD CENTRE (CC) mm	ISO 2328 - FEM	CARRIAGE WIDTH (A) mm	MIN FORK CARRIAGE (B) mm	OPENING RANGE (C) mm		FORK WIDTH (D) mm	THICKNESS (S) mm	CENTER OF GRAVITY (CG) mm	WEIGHT (Q) Kg
						(C MIN)	(C MAX)				
18LFA2C0021	2500	500	II	970	720	340	920	130	70	37	88
18LFA2C0022	2500	500	II	1040	720	340	990	130	70	38	93
18LFA2C0023	2500	500	II	1150	720	340	1100	130	70	40	99
18LLL3C0011	5000	500	III	1150	860	380	1100	150	80	44	141
18LLL3C0013	5000	500	III	1250	860	380	1200	150	80	45	150
18LLL3C0014	5000	500	III	1350	860	380	1300	150	80	46	160

Hydraulic functions required: 1 | Maximum working pressure: 110 bar



OPTIONS

- Pipes and Fitting Kit.
- Quick Release Hoses couplings Kit.
- Pressure Gauge.
- Bronze Wear Pads.
- Quick Release Hooks.
- Drilling for Load Backrest.
- Solenoid Valve two Functions with Electric Kit (specify voltage).
- Pressure Relief Valve supplied as standard.
- Check Valve for Barrel Grabbing.
- Automatic Greasing System for Semi-Integral Sideshift.

ADDITIONAL EQUIPMENT ON REQUEST

- Forks Positioners with special width and/or stroke.
- Forks with any section and lenght.
- Load Backrest of various widths and heights.

OIL FLOW RATE

TYPE	ISO 2328 - FEM	MIN CAPACITY (L/min)	MAX CAPACITY (L/min)	RECOMMENDED CAPACITY (L/min)
575	ALL	2	8	5

- A - Pin-Type Forks
- B - Bolted Forks
- C - Welded Forks
- D - Telescopic Forks

