

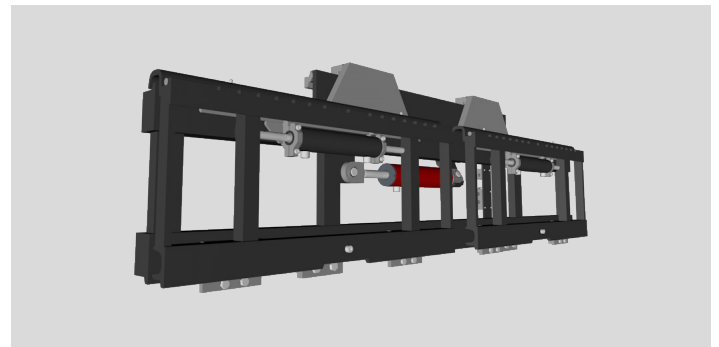
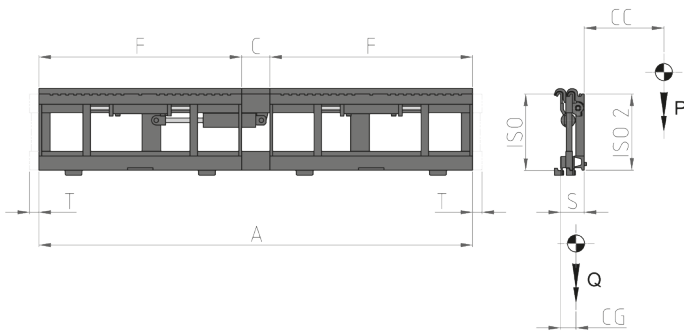
# Multipallet Handlers

**Multipallet Handler** that allows to move multiple pallets simultaneously. It is made of a back shifting structure, where in the front, a fixed carriage and an additional shifting carriage are connected. This permits the moving of two or four pallets at the same time, it depends on the type of forks used.

## 107.3 TRIPLE SIDESHIFT

REFERENCE	CAPACITY (P) Kg	LOAD CENTRE (CC) mm	ISO 2328 - FEM	CARRIAGE WIDTH (A) mm (F) mm		DISTANCE (C MIN) mm (C MAX) mm		STROKE (T) mm	THICKNESS (S) mm	CENTER OF GRAVITY (CG) mm	WEIGHT (Q) Kg
15AFA2C0001	2500	500	II	1610	800	10	310	100	125	68	239
15AFA2C0002	2500	500	II	2100	980	20	420	100	125	68	286
15AHY7C0001	3500	500	III	2100	980	20	420	100	144	78	400
15AHY7C0002	3500	500	III	2180	980	100	500	100	144	80	408

Hydraulic functions required: 2 | Maximum working pressure: 200 bar



### OPTIONS

- Pipes and Fitting Kit.
- Quick Release Hoses couplings Kit.
- Pressure Gauge.
- Bronze Wear Pads.
- Quick Release Hooks.
- Solenoid Valve two Functions with Electric Kit (specify voltage).
- Pressure Relief Valve.
- Automatic Greasing System for Semi-Integral Sideshift.

### ADDITIONAL EQUIPMENT ON REQUEST

- Multi Pallet Handlers with special width and/or stroke.
- Forks with any section and lenght.
- Load Backrest of various widths and heights.
- Load Stabilizers.

### OIL FLOW RATE

TYPE	ISO 2328 - FEM	MIN CAPACITY (L/min)	MAX CAPACITY (L/min)	RECOMMENDED CAPACITY (L/min)
107.3	ALL	10	20	15

- A - Pin-Type Forks
- B - Bolted Forks
- C - Welded Forks
- D - Telescopic Forks

